

My Lords, Ladies and Gentlemen,

With the support and encouragement of many friends in the Livery I offer myself as a candidate for the Shrieval Election on the 25th June 1990.

Since it became known that I was standing as a candidate I have been constantly questioned about the Office of Sheriff. For this reason I have modified the usual form of address to include not only details of myself but also some historical notes about this ancient Office.

I am very aware of the responsibility and traditions of the high office of Sheriff and, if elected, pledge myself to discharge these duties to the very best of my ability.

As a Liveryman you have two votes. In accordance with custom, please use one in favour of the Aldermanic candidate, Mr. Christopher Walford, and I hope you will give me your second vote.

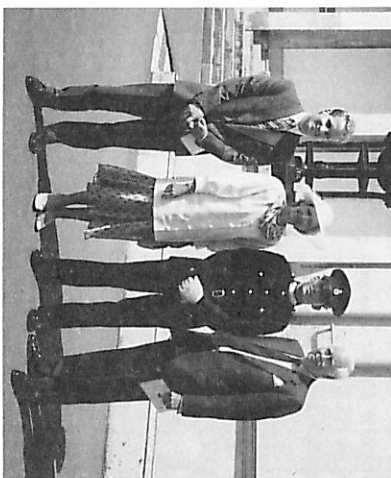
*I am my Lords, Ladies and Gentlemen,
Your obedient servant*

John A.F. Taylor

JOHN A.F. TAYLOR TD
Citizen and Wheelwright

In the event of a Poll being demanded this will take place at **Guildhall on Monday 9th July 1990, between the hours of 8.00am and 6.00pm.** The result will be announced the same evening at the Adjourned Common Hall as soon as the count is complete at approximately 7.00pm.

Do please attend to record your votes



The Sovereign's Parade Sandhurst August 1989

John Taylor has enjoyed his links with the City of London from childhood. Like his father, he is a Liveryman of the Worshipful Company of Wheelwrights and was Master in 1987. He is also a Liveryman of the Painter-Stainers Company.

Born in Kent in 1933, and following his education at Dulwich College, John was commissioned into the Royal Artillery during his National Service in 1952.

He worked in the City from 1954 to 1966, first on the Mincing Lane Tea Market and then as a Produce Broker on the London Corn and Baltic Exchanges. Since then he and his wife Sally have established a design, manufacturing and distribution company in Greenwich specializing in quality products for the picture frame industry.

Apart from attending the Court of the Wheelwrights Company John regularly travels the short distance to the City in connection with his many other interests there: notably the Honourable Artillery Company — of which he is a Veteran Member having served from 1954 to 1966 when he retired with the rank of Major — the City Livery Club, the Vintny and Dowgate Ward Club, and the City of London Branch of the Royal Society of St. George, where he is a Council Member.

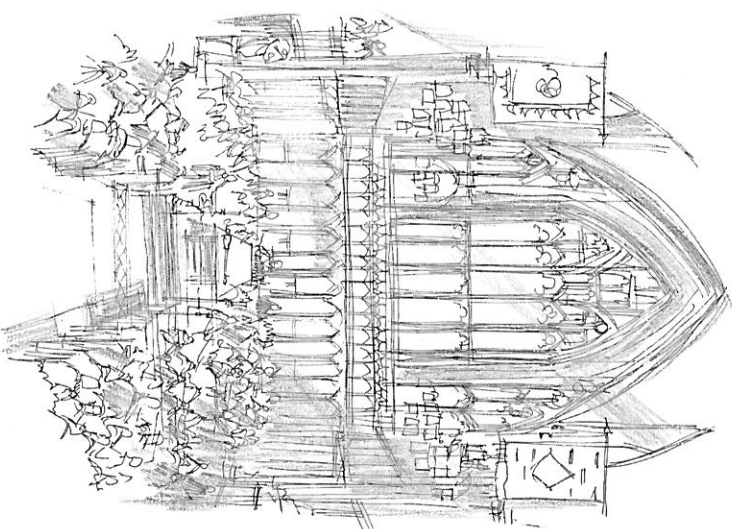
Their twin sons, Toby and Timothy, at 21, are now less frequent visitors to the family home near Greenwich Park as Toby is in his third year studying for a Business Degree at Brighton Polytechnic while Timothy, following in his father's footsteps, has recently been commissioned into the Royal Artillery. Both are Liverymen of the Worshipful Company of Wheelwrights by servitude.

Amongst other interests, Sally and John are Friends of the Guildhall School of Music and Drama, and the National Art Collection fund; also, they both take an active interest in local affairs as Friends of the National Maritime Museum, members of the Greenwich Society, and Governors of local schools.

They enjoy meeting people and, if elected, John Taylor would undertake the ancient office of Sheriff with great enthusiasm, as an unique opportunity to serve the City of London, in all of which he would have the unstinting support of his wife Sally and their two sons.

Published by: WB, Fraser, 1 Alicyn Road, London SE21 Tel: 081 670 4770
Printed by: SBS Litho, 1 Greenwich South Street, London SE10 8NW

The Election of Sheriffs in Common Hall



12 Noon on Monday 25th June 1990

AN ADDRESS BY

JOHN A.F. TAYLOR TD

WHEELWRIGHT AND PAINTER-STAINER

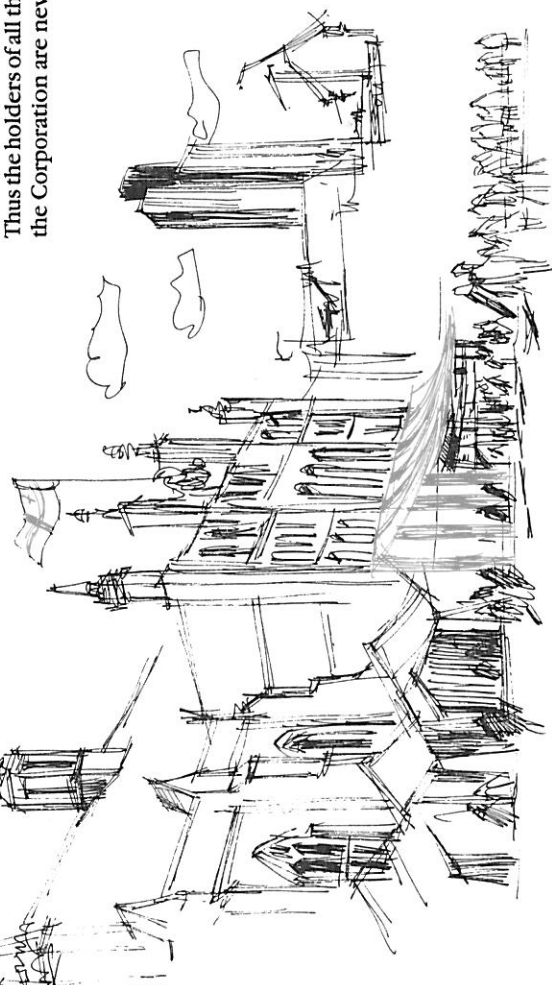
CANDIDATE FOR 1990 SHRIEVAL ELECTION IN THE CITY OF LONDON

The office of Sheriff in the City of London is even older than the Mayoralty and the Livery Companies which are now responsible for electing the Sheriffs each year. Indeed, Henry I in a Charter of 1132, is believed to have granted the citizens of London the right to elect their own Sheriff (in return for a payment to the King's Exchequer or 'farm'), together with one for Middlesex, the two regions having close trading ties.

A man of great power and importance, the Sheriff then collected taxes and imposed the King's justice on the citizens. Thus his authority continued and was confirmed in further Charters granted by Henry III, Edward I and Edward III. Records indicate that from the mid 14th century to 1674 the Mayor is believed to have elected one of the Sheriffs himself by offering a toast to his candidate on a public occasion. Between 1642 and 1652 he might nominate but not elect (although his choice was usually honoured). Objections, however, were voiced over this period and in 1674 a Committee was set up to look at the whole matter and in 1694 the Mayor finally lost his right of nomination.



The Charter of William I to the City Corporation of London Records Office



NWGE/57/2

The Sheriffs were then elected by the Mayor, Aldermen and 'Good Men' or 'Commonalty' — with a few exceptions — until 1878 when, by an Act of Common Council, all previous rules were repealed and the right of election passed to the Liverymen of the City's Companies in Common Hall assembled on 24th June each year. A year later, in 1888, by Local Government Act the City no longer had the right to elect a Sheriff for Middlesex but continued to elect two for the City alone. The 'farm' rent payable to the exchequer (previously to the King) was redeemed by the Corporation of London which now receives all dues to the City Shrievalty.

The election of Sheriffs in Common Hall is one of the most important occasions in the City's ceremonial year. Liverymen are summoned to Guildhall in exercise of 'Their undoubted right to elect two fit and proper persons to be Sheriffs of the City of London for the year ensuing'.

The election takes place by show of hands and it is open to the unsuccessful to demand a poll — in which case, if granted, it takes place in Guildhall a fortnight later.

The successful candidates are then admitted to office as the Queen's Sheriffs on 28th September following — that is to say on the day prior to the election of a new Lord Mayor: thus they have six weeks to become established in office — or as the phrase goes, 'to become Mansion House trained' — before a new Lord Mayor takes over in the second week of November.

Interestingly, a similar time scale applies also to the third significant City Office — that of Chief Commoner — who is elected as Chairman of the City Lands and Bridge House Estates Committee at its first meeting in January each year.

Thus the holders of all three of the most influential positions in the Corporation are never new in office at the same time.

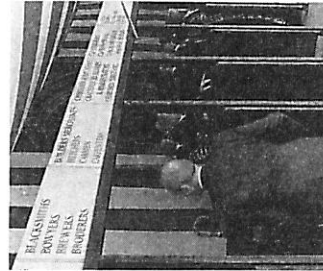


The Sheriff in his State Carriage

Campaign Committee

Chairman: R.C.A. FitzGerald MA CC
Secretary: W.B. Fraser CC
Treasurer: P.J. Willoughby CC

K.E. BALLARD MC. CC. *Sheriff 1978*. Wheelwright
S.A.A. BLOCK CC. *Sheriff 1989*. Broderer. Weaver.
SIR COLIN COLE KCBO. TD. BCL MACC. *Sheriff 1976*.
Scrivener. Basketmaker. Painter-Stainer.
C.B. DAVIS. Wheelwright, Master 1990.
A.N. ESKENZI CC. *Sheriff 1981*. Pattenmaker. Arbitrator
R.C.A. FITZGERALD MA. CC. *Sheriff 1983*.
Loriner. Gold & Silver Wyre Drawer.
W.B. FRASER CC. Gardener.
J.G.M. HART MA. *Sheriff 1979*. Shipwright.
H.W.S. HORLOCK MA. Deputy. *Sheriff 1972*.
Saddler. Gardener. Fletcher. Plaisterer.
MAJOR D. IDE-SMITH. Mercer, Master 1978.
J.E. NEARY CC. *Sheriff 1985*. Shipwright. Chartered Surveyor.
M.W.D. NORTHCOTT. Painter-Stainer, Master 1990. Haberdasher.
R. SAUNDERS. Deputy. *Sheriff 1987*.
Clothworker. Chartered Surveyor.
D.M. SHAULT CC. Coachmaker, Master 1988. Fletcher.
R.B. TULEY TD. Baker, Master 1987.
THE REV. B.A. WATSON OBE.
Haberdasher. Spectacle Maker. Shipwright.
P.J. WILLOUGHBY CC. Glass Seller, Master 1989.



Wicket gates at the entrance to Guildhall at Common Hall

